

MITSUBISHI CANTER ROSA BUS 1986-1995 / MITSUBISHI CANTER FE511 3.5 TON / FE647 6.5 TON



1 F.BUMPER W/O FOG LAMP COVER      2 FRONT BUMPER WITH FOG LAMP COVER      3 GRILLE CLEAR/AMBER SHORT TYPE



4 GRILLE GY/CLEAR SHORT TYPE      5 FRONT BUMPER W/O FOG LAMP COVER      6 FRONT BUMPER W FOG LAMP COVER



7 GRILLE GYM/CLEAR/AMBER      8 GRILLE GY/CLEAR      9 CORNER LAMP



10 CORNER LAMP CLEAR      11 FOG LAMP CLEAR      12 FOG LAMP YELLOW

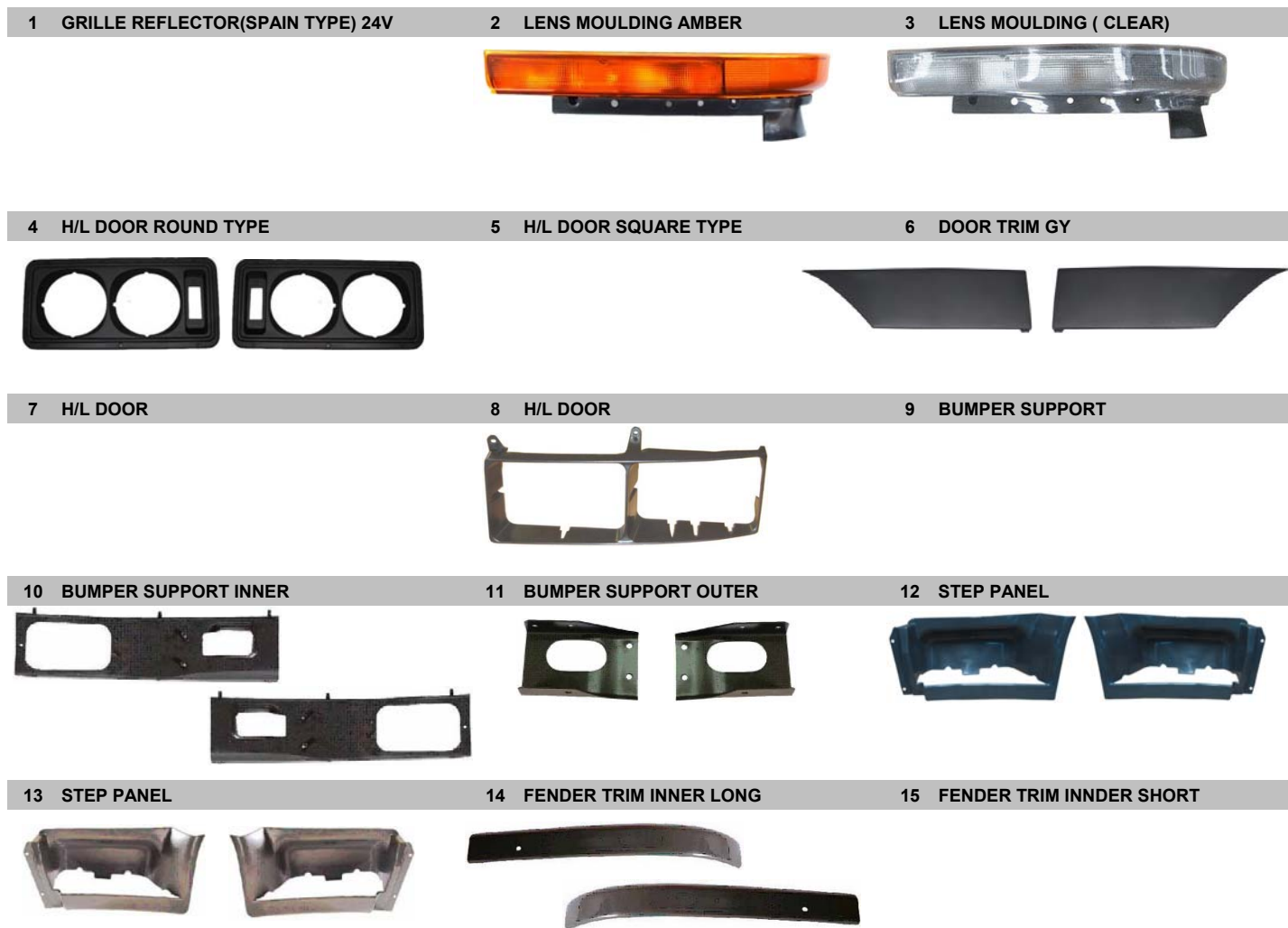


13 FOG LAMP COVER      14 TAIL LAMP      15 SIDE LAMP



NO	CODE	DESCRIPTION	MODEL	YEAR	OEM	PCS	NW	GW	M3	PART LINK
1	MBB511 NA	F.BUMPER W/O FOG LAMP COVER	FB511 SHORT	'96-'04	MC139299	1	1.80	2.25	0.0400	
2	MBB511 NB	FRONT BUMPER WITH FOG LAMP COVER	CANTER FB511	'96-'04	MC139300	1	1.76	2.21	0.0200	
3	MBG511 NA	GRILLE CLEAR/AMBER SHORT TYPE	FB511	'96-'98	MC139303	1	1.61	1.61	0.1404	
4	MBG511 NB	GRILLE GY/CLEAR SHORT TYPE	FB511	'96-'98	MC139303	1	1.61	1.61	0.1404	
5	MBB647 NA	FRONT BUMPER W/O FOG LAMP COVER	FB647 LONG 6.5T	'96-'04	MC139301	1	2.86	3.31	0.0300	
6	MBB647 NB	FRONT BUMPER W FOG LAMP COVER	FB647 LONG	'96-'04	MR139302	1	2.71	3.15	0.0300	
7	MBG647 NA	GRILLE GYM/CLEAR/AMBER	FB647 LONG 6.5T	'96-'98	MC139306/MB07084GA	10	19.50	21.33	0.1715	
8	MBG647 NB	GRILLE GY/CLEAR	FB647 LONG 6.5T	'96-'99	MC139306/MB07084GB	10	19.50	21.33	0.1715	
9	MBCL526 LA	CORNER LAMP LH	CANTER		MC844222	10	6.00	7.00	0.1016	
	MBCL526 RA	CORNER LAMP RH	CANTER		MC844223	10	6.00	7.00	0.1016	
10	MBCL647 LA	CORNER LAMP LH CLEAR	CANTER FE511/647	'96-'99	MC139766	50	10.00	13.66	0.0800	
	MBCL647 RA	CORNER LAMP RH CLEAR	CANTER FE511/647	'96-'99	MC139767	50	10.00	13.66	0.0800	
11	MBFL647 LA	FOG LAMP LH CLEAR	CANTER FE511	'96-'05	MC139758	10	4.00	5.00	0.0500	
	MBFL647 RA	FOG LAMP RH CLEAR	CANTER FE511	'96-'05	MC139759	10	4.00	5.00	0.0500	
12	MBFL647 LB	FOG LAMP LH YELLOW	CANTER FE511	'96-'05	MC139758	10	4.00	5.00	0.0500	
	MBFL647 RB	FOG LAMP RH YELLOW	CANTER FE511	'96-'05	MC139759	10	4.00	5.00	0.0500	
13	MBFC647 LA	FOG LAMP COVER				50	2.65	3.78	0.0753	
	MBFC647 RA	FOG LAMP COVER				50	2.64	3.76	0.0800	
14	MBL647 LA	TAIL LAMP LH	FB511/FE647	'96-'05		20	12.00	14.00	0.1241	
	MBL647 RA	TAIL LAMP RH	FB511/FE647	'96-'05		20	12.00	14.00	0.1241	
15	MBSL647 LA	SIDE LAMP LH	FB511/FE647	'96-'05	MC145428	10	3.00	4.00	0.0300	
	MBSL647 RA	SIDE LAMP RH	FB511/FE647	'96-'05	MC145429	10	3.00	4.00	0.0300	

# MITSUBISHI CANTER ROSA BUS 1986-1995 / MITSUBISHI CANTER FE511 3.5 TON / FE647 6.5 TON



NO	CODE	DESCRIPTION	MODEL	YEAR	OEM	PCS	NW	GW	M3	PART LINK
1	MBSL647 LB	GRILLE REFLECTOR(SPAIN TYPE) LH 24V	FE647/FB511	'96-'05		10	3.00	4.00	0.0300	
	MBSL647 RB	GRILLE REFLECTOR(SPAIN TYPE) RH 24V	FE647/FB511	'96-'05		10	3.00	4.00	0.0300	
2	MBLM647 LA	LENS MOULDING LH AMBER	CANTER FE511/647	'96-'99	MR109211	25	11.00	16.56	0.0800	
	MBLM647 RA	LENS MOULDING RH AMBER	CANTER FE511/647	'96-'99	MR109212	25	11.00	16.56	0.0800	
3	MBLM647 LB	LENS MOULDING LH ( CLEAR)	CANTER	96-05	MBLM647 LB	20	8.00	10.00		
	MBLM647 RB	LENS MOULDING RH (CLEAR)	CANTER	96-05	MBLM647 RB	20	8.00	10.00		
4	MBD100 LA	H/L DOOR ROUND TYPE	CANTER ROSA BUS	'85-'91	MC951986	20	0.33	0.40	0.1110	
	MBD100 RA	H/L DOOR ROUND TYPE	CANTER ROSA BUSRO	'85-'91	MC951987	20	0.32	0.40	0.1100	
5	MBD100 LB	H/L DOOR SQUARE TYPE	CANTER ROSA	'85-'91		10	1.73	2.58	0.0482	
	MBD100 RB	H/L DOOR SQUARE TYPE	CANTER ROSA BUSRO	'85-'91		10	1.71	2.56	0.0482	
6	MBD511 LA	DOOR TRIM LH GY	FB511-FE647	'96-'98	MC142059	5	0.34	0.34	0.1942	
	MBD511 RA	DOOR TRIM RH GY	FB511-FE647	'96-'98	MC142060	5	0.34	0.34	0.1942	
7	MBD527 LA	H/L DOOR	FUSO 527	'84-'85	MC907296	5	2.00	3.00	0.0193	
	MBD527 RA	H/L DOOR	FUSO 527	'84-'85	MC907297	5	2.00	3.00	0.0193	
8	MBD647 LA	H/L DOOR	CANTER FE519/659	'99-'05	MC140652	10	1.99	3.12	0.0482	
	MBD647 RA	H/L DOOR	CANTER FE519/659	'99-'05	MC140653	10	1.93	3.06	0.0482	
9	MBBS511 LA	BUMPER SUPPORT LH	CANTER FE511	'96-'03		5	8.00	10.00	0.0300	
	MBBS511 RA	BUMPER SUPPORT RH	CANTER FE511	'96-'03		5	8.00	10.00	0.0300	
10	MBBS647 LA	BUMPER SUPPORT INNER LH	CANTER FE647	'96-'03	MC139287	5	6.00	8.00	0.0600	
	MBBS647 RA	BUMPER SUPPORT INNER RH	CANTER FE647	'96-'03	MC139286	5	6.00	8.00	0.0600	
11	MBBS647 LM	BUMPER SUPPORT OUTER LH	CANTER	'95-'06	MC139297	1	2.00	3.00	0.0200	
	MBBS647 RM	BUMPER SUPPORT OUTER RH	CANTER	'95-'06	MC139298	1	2.00	3.00	0.0200	
12	MBSP511 LA	STEP PANEL LH	CANTER FE511	'96-'03	MC149050L	5	5.00	6.00	0.0600	
	MBSP511 RA	STEP PANEL RH	CANTER FE511	'96-'03	MC139312	5	5.00	6.00	0.0600	
13	MBSP647 LA	STEP PANEL LH	CANTER FE647	'96-'03	MC139313	5	5.00	6.00	0.0600	
	MBSP647 RA	STEP PANEL RH	CANTER FE647	'96-'03	MC139314	5	5.00	6.00	0.0600	
14	MBF647 LA	FENDER TRIM INNER LH LONG	CANTER	'98-'04	MC139538	10	3.58	4.92	0.0800	
	MBF647 RA	FENDER TRIM INNER RH LONG	CANTER	'98-'04	MC139539	10	3.61	4.94	0.0800	
15	MBF647 LB	FENDER TRIM INNER LH SHORT	CANTER	'98-'04		10	3.58	4.92	0.0840	
	MBF647 RB	FENDER TRIM INNER RH SHORT	CANTER	'98-'04	MC139539	10	3.61	4.94	0.0840	

